



ISSN 1175-8260

New Zealand Plant Protection Society (Inc)

NEWSLETTER

CONTACTS

President

George Follas
Etec Crop Solutions
PO Box 51 584, Pakuranga
Auckland 2140
Ph 021 790355
gfolias@etec.co.nz

Vice President

Lisa Jamieson
Plant & Food Research
Private Bag 92169
Auckland Mail Centre
Auckland 1142
lisa.jamieson@plantandfood.co.nz

Immediate Past President

Karyn Froud
Karyn Froud & Associates
11 Pine St, Mt Eden
Auckland 1041
Ph 027 514 4159
karyn.froud@orcon.net.nz

Secretary

Jenny Taylor
PO Box 21839, Henderson,
Auckland 0650
Ph 09 812 8506
Fax 09 812 8503
secretary@nzpps.org

Treasurer

Dr Toni Withers
Scion
Private Bag 3020,
Rotorua Mail Centre
Rotorua 3046
Ph 07 343 5721
toni.withers@scionresearch.com

Journal Editor

Dr Sue Zydenbos
1451 Old West Coast Road
Halkett, RD 1, Christchurch
7671
Ph 03 318 1531
zydenbos@xtra.co.nz

Website Editor

Dr John Kean
AgResearch
5 Nathan Pl, Athenree, RD1
Katikati 3177
Ph 03 983 3976
john.kean@agresearch.co.nz

May 2014

Editorial – John Fletcher Senior Scientist, Plant and Food Research, Lincoln

Further Information Papers are available on the RSNZ website <http://www.royalsociety.org.nz/expert-advice/information-papers/>

The recently released 'Emerging Issues' paper from the Royal Society of New Zealand 'Challenges for Pest Management in New Zealand' states 'New Zealand remains under intense pressure from pests which threaten our economy and environment, despite investing heavily in biosecurity and pest management systems. Ongoing targeted investment is needed to protect our native land and aquatic environments and primary production from weeds, vertebrate and invertebrate pests and pathogens'.

<http://www.royalsociety.org.nz/expert-advice/information-papers/yr2014/pestmanagement/>

This document is a 'must read' for scientist working in plant protection and for others interested in preserving our productive and native environments from pest and disease incursions.

The 'focus of this contribution is to alert interested parties to the on-going changes and increasing complexity in the way New Zealand must deal with its pest management threats'. The paper covers a series of topics including: impacts and cost of pests, emerging pest issues, monitoring and surveillance as well as management tools and strategies and their limitations. A selection of case studies is presented to illustrate key points along with a set of conclusions.

One element coming through this report is the need for more trained people. People are needed in order increase the chances of successful eradication of new incursions and to prevent the recovery of existing pests after control has been applied. These trained people include specialist taxonomists so indigenous species can be distinguished from exotic threats, biologists so we can better understand pest interactions, and their impacts and staff to translate and scientific research and new technology in the field. There is also a plea to involve 'citizen science' to monitor and care for local environments to supplement and support specialists. Public attitudes need to be explored to engage and gather support and understanding of eradication and control policies.

It is very pleasing to see that Society members and former members have contributed significantly to the paper. It is incumbent on us as a Society to continue to support the momentum of this discussion by engaging and informing colleagues, the public and policy makers on the important issues it covers.

Further Information Papers are available on the RSNZ website <http://www.royalsociety.org.nz/expert-advice/information-papers/>



From the Editor – May 2014

With 66 abstracts submitted, volume 67 is shaping up to be spot on “average”! As we all know, nothing ever ends up as we expect, but it is a reasonable guess that the programme will be full, so papers will be presented well into Thursday.

The main issues with online submission appear to be uploading of the figures. As you know there are guidelines, and keeping file size to a reasonable limit is one of them. If you are having problems you will need to check the guidelines, and if you still think you are within the limits, then please contact John Kean, our web editor (webadmin@nzpps.org). Note that it is pointless sending me your manuscript and figures as I cannot upload any files to the website. The uploading is a critical part of the refereeing process, and the only person who can do this is the one who submitted the abstract.

The final programme for the conference is developed around the first week of June when all of the papers have been sent to the Printer and the final numbers are known. Setting the programme is a rather complex process with a number of contributing factors, and the draft presented to the Executive Committee at the June meeting always raises some good debate. If you have any particular themes that you would like me to consider grouping the papers around, then I am always open to suggestions.

Some standard reminders as we approach the conference:

- The draft programme will be posted on the website about 15 June.
- Please notify me if you think you will qualify for the “Emerging Presenter” award, which is for “emerging researchers presenting for the first time at a NZPPS conference”.
- Instructions for presenters are available on the website - please read them carefully. Please bring your PowerPoint presentation to the conference and give it to the AV coordinator well before your session – do not email it to me beforehand!
- Please check the guidelines on the website for information about preparation of posters, particularly details on size specifications.

I am looking forward to seeing you all in Taupo this year.

Sue Zydenbos



Changes in the Executive...

We lose one high calibre Secretary and gain another

We have a new Secretary/administrator.

At our AGM last year Sonja Reid was voted in as Secretary and carried out the role with flair, commitment and professionalism. Unfortunately with an opportunity for the family to move to Australia Sonja had to resign. Thank you Sonja for all your efforts and work on behalf of the Society. Much of the work is behind the scenes and can go unnoticed. However if it is not done the very structure the Society runs on would collapse and we all know what a catastrophe that would be. You will be missed, all the very best to you and the family in your new country.

The search was on for a replacement. As you will have seen, a notice for applications to fill the position was sent to the membership and outside the Society.

Applications were received and these were reviewed by the Officers of the Society. After careful consideration a successful applicant was selected and she accepted. We are pleased to introduce Jenny Taylor as our new Secretary/Administrator. Jenny is also the Secretariat for The New Zealand Institute of Agricultural & Horticultural Science, a role she has enjoyed for the past 17 years. She will bring this skill set and ability to the role in our Society and we are sure will be a huge help improving our administrative systems, and delivery of service to members.



Jenny can be contacted: jennytaylor@iconz.co.nz
Tel (09) 8128506 Fax (09) 8128503

19th Australasian Weeds Conference

19th Australasian Weeds Conference

Science, Community and Food Security: the Weed Challenge

University of Tasmania, Hobart - 1-4 Sept 2014



The 19th Australasian Weeds Conference will be held in Hobart, Tasmania from 1-4 September 2014. To register your interest please go to their web page. www.eventspro.net/leishman/getdemo.ei?id=7020146&s=_62W0ZSYUB

MEMBERSHIP: Your membership invoices should now be in your Inbox so please print them and arrange payment promptly. **You need to be a paid up NZPPS member to qualify for the cheaper conference rate!** *And remember, online is now our preferred payment method.*

Also, Sustaining/Corporate Sponsors can now nominate a person to be their **Corporate contact person**, bringing better value for your generous membership. **See your invoice for details.**

New Zealand Plant Protection Society Symposium and Annual Conference 2014

Symposium 2014

The plant protection data toolbox: On beyond t , F and χ

Wairakei Resort, Taupo, NZ, 11 August 2014



Boldly going beyond the t-test, ANOVA and chi-square.

This symposium will outline new ways of designing and analysing plant protection data sets. We aim to showcase a range of tools and techniques for extracting more value from new and existing weed, pest and disease data.

Topics may include study design, sample size calculations, decision support, risk modelling, pest or disease spread modelling, multivariable statistical analysis, spatial analysis, neural networks and data mining.

The proposed sessions are:

1. Decision support under risk and uncertainty (led by Robert Beresford)
2. What really matters? Multivariable data analysis (led by Karyn Froud)
3. Where to look: Data analysis for detection and surveillance (led by John Kean)
4. Letting the data speak: Computational intelligence and data mining (led by Sue Worner)

Sessions will target applied use of methodologies for plant protection and biosecurity researchers and decision makers. The intended audience includes researchers, consultants, decision makers and students in plant protection and broader disciplines. Several international experts will present key-note addresses.

The call for papers has closed and a draft programme should be posted on the NZPPS website (www.nzpps.org) in the next few weeks.

For more information, please contact one of the members of the organising committee: Karyn Froud, Sue Worner, John Kean and Robert Beresford, or email the organisers at symposium@nzpps.org.

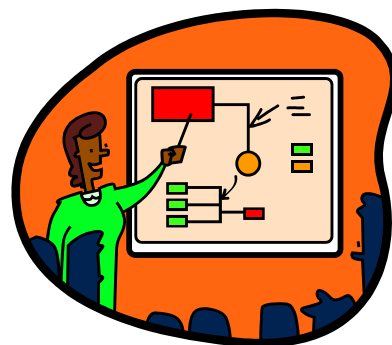
Conference 2014

The 2014 NZPPS Annual Conference will be held from the morning of Tuesday 12th to the afternoon of Thursday 14th August 2014 at the Wairakei Resort Taupo (<http://www.wairakei.co.nz/>).

Wairakei Resort is actually 7 km north of Taupo and has everything we need for a great conference right on site. There is a range of accommodation from single rooms, to large suites, and even family cabins. Wairakei Resort Taupo boasts two outdoor geothermally heated swimming pools (a proper lap pool set in a valley below the resort, as well as the lagoon pool nearer to the conference venue) and six spa pools each in their own fenced area with stars twinkling above, also a gym, beauty spa, tennis court, squash court, petanque, and a 9 hole Golf Course, but we can't imagine anyone attending our exciting conference will have time to do all these unless you want to stay an extra day. But definitely pack your swimming costume, tennis rackets and such. If you don't have transport it would be recommended to stay at the resort. We have secured a *special accommodation rate for conference delegates of \$145 per room per night*. To secure this you need to **fill in the Accommodation Form that is printed at the back of this newsletter** and Fax or scan it back to the resort. Despite all these tempting activities on site, for those not wanting to stay at the resort there are lots of accommodation options in Taupo town. If flying in Taupo has its own small airport, also Rotorua airport is only a 50min drive away as is Hamilton Airport.

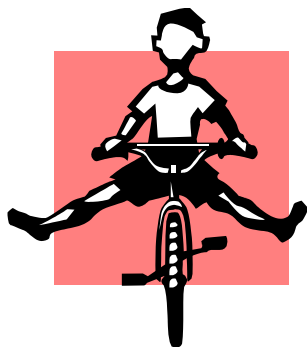
Conference registration is \$340 for early bird member rate but registrations will only be open online until August 4th. If you wait until you appear at the registration desk to pay up you will be hit with a \$50 late fee, no exceptions!

Conference registrations will be open on our website www.nzpps.org/payment from early June, so we recommend you organise yourself and others early to come and enjoy another great conference!.



Mountain biking at Taupo

Those members keen to experience Taupo's mountain biking while at the conference are well catered for. One of the advantages of staying in the Taupo region is the myriad of mountain bike tracks available within a short cycling distance to the resort. From the back of your unit you can jump on your bike and hit the tracks around Taupo. If it's full on mountain biking you crave, then find the resort track that is sign posted from the back of Fairways Cafe. It is two kilometres along the resort track to Wairakei MTB Park. Here you'll find 50 kilometres of single tracks from grades two to six. Or the other way is an easy lope ride around Aratiatia over Huka Falls and back. The resort track runs alongside the road past the Honey centre and leads into the back of the Taupo hotel and then around beside the hot water stream and back to Fairways Cafe. It will allow people to ride from the resort up to the Craters of the moon Wairakei MTB Park. This Mountain Bike Park is now a members-only access this facility so you need to be organised and pay a membership fee with Bike Taupo BEFORE arriving. This can be purchased via the following webpage http://www.mountainbiketaupo.org.nz/uploads/100304/files/Membership_Form_2014.pdf



NZPPS OPTIONAL PUB QUIZ

So what are your plans for that awkward 1st night at the annual New Zealand Plant Protection Society Conference when there is nothing planned in the schedule? Have you checked out the eatery options in the closest populated area, namely Taupo? Did you know it is a lengthy 10km drive to Taupo? Have you made reservations? Do you have dining companions? Who is going drive to dinner? How are you going to split the bill? So many unanswered questions and tough decisions!

Well you are in luck because the NZPPS executive has a great night planned that includes a rousing pub quiz to be held on site at the Wairakei Resort. The cost will be \$30 and optional on the registration form. The price includes platters of pub style food at each team table and the hotel bar will be open throughout the evening with the option of cash or charge back to your room to give your team that much needed inspiration for the difficult questions. There will be impressive NZPPS executive quiz masters, prizes for the winning team and most importantly bragging



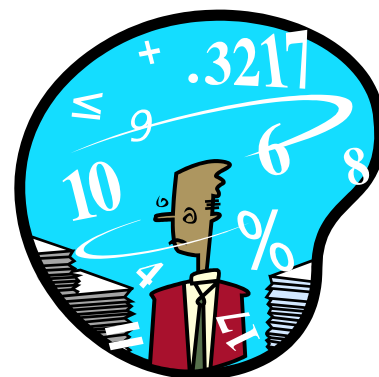
rights. So get your team of 6-8 together (or we'll assist you to get into groups on the night) and plan to mesmerize your colleagues or be stumped by the general knowledge, pop culture, history, sports and a smattering of plant protection questions derived from the 2014 conference poster session.

NZPPS 2014 Conference Professional Development programme

Wairakei Resort, Taupo 12-14 August 2014

A] An introduction to using R statistical software (this course is practical and laptops are recommended)

This 90 min course will cover the basics of what R can do and key components of getting started. This will involve loading R and R-studio onto your laptop (onto an external drive) from the CRAN repository and setting a working directory and importing data from a csv file from Microsoft Excel. We will use an example data set and cover basic exploratory data analysis (visualising data in tables and histograms) and run some simple T-tests and boxplots. The final part of the course will cover code for simple graphics in R and then finish with a presentation of the wider capabilities of the software, including advanced analysis and graphics.



B] Scientific Writing – nailing down a good discussion

This 90min course will cover the essentials for discussing your results. The course will cover three major themes, we will talk about what should be presented in a discussion for a technical report, we will also cover what should be included in writing a discussion for a peer reviewed paper and finally we will cover the key differences between the two and what extra information is required to convert from a commercial report to a robust scientific paper concentrating on the discussion.

C] Study Design to Data Analysis

This 90 minute course is all about getting the design right at the start of the study so that the results have the power to detect a difference between groups (e.g. sprayed or unsprayed) if one truly exists. The course will cover common study designs for plant protection and expand to more advanced study designs and discuss the key design elements for each. Then we will get down to the nitty gritty of sample size, power calculations and analysis for different study designs, the factors that need to be considered when working them out and introduce some easy online calculators for working through some example sample sizes for different study designs.

REMINDER

Scholarship Applications

Applications for the 2013 **New Zealand Plant Protection Society Research Scholarship** and the **Dan Watkins Scholarship in Weed Science** are due by 1st October. Scholarship applications for students registered at a university or other recognised New Zealand tertiary institutions will be considered.



Long-term Members Travel Award

Applications are due by 1st July.

NZPPS welcomes applications from as wide a range of members as possible, including technical staff as well as scientists. Travel Award funds amounting \$2,500 are to be used at the discretion of the successful applicant, including use for conference attendance, and/or training, either nationally or internationally.

Make sure you get your name into the hat as it will be drawn at the AGM!

International Association for the Plant Protection Sciences (IAPPS)

Trevor Jackson draws our attention to the International Association for the Plant Protection Sciences (IAPPS) whose mission 'is to promote an integrated and sustainable approach to plant protection worldwide, from research through to practical application'. 'Crop Protection', is the Official Journal of IAPPS. Their IPPC Congress will be held next year in Berlin –

<http://www.plantprotection.org/home>

Errata for New Zealand Plant Protection, Volume 66 (2013)

Changes may be made to papers and poster abstracts that have been published in the hard copy of New Zealand Plant Protection. These changes are made to the .pdf file and the altered versions are available on the website (www.nzpps.org). An "Errata List" is printed in the December issue of the New Zealand Plant Protection

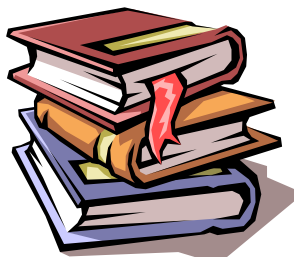
Society newsletter. If in doubt about the contents of a printed paper – remember that the website always has the most recent version of a paper.

Update May 2014. Corrections were made to another paper, affecting page 26 in Volume 66 (2013): Figure 2 has been replaced completely. Text in caption should read ... for 0–12 minutes. Values ... (Note that 20 minutes has been replaced by 12 minutes).

OBITUARY

It is with regret we record the recent death at 101 years of **Dr Edward Colin Selby Little** QSO MBE FNZIAS MSc D.Phil. Dr Little was a former Executive Member of the NZ Weed Control Society and a researcher into the chemical control of weeds.

Books for sale now at Touchwood



NZPPS titles (books, journals and symposia proceedings) are now distributed by Touchwood

Books (www.touchwoodbooks.co.nz). After an internal review, Landcare

Research concluded that with falling book sales and a dismal prospect for printed material in the future, that the Manaaki Whenua Press bookshop was no longer viable and it ceased trading on 21 October 2013. However, NZPPS titles were, and still are, very good sellers and as a result we quickly had three offers on the table (Lincoln University Bookshop, Nationwide Book Distributors and Touchwood Books) to take over distribution. After some negotiation the Society went with Touchwood books who offered us identical terms as we had with MW Press including free storage of books. Our website now points you directly to the Touchwood website and there is still a 10% discount for NZPPS members, on NZPPS titles only, purchased from Touchwood. We are also able to sell at a discounted rate to members at conferences. So although there was unfortunately a one-off transport cost to move our stock of books from Lincoln to Levin, we are very happy with the outcome and with a different array of contacts, Touchwood Books have already made a substantial number of sales. The Entomological Society also went with Touchwood books while the MW Press titles went to Nationwide Book Distributors.

Contact Details:

Postal: Touchwood Books | PO Box 353 | Levin 5540 | New Zealand

Delivery: | C/- NZ Courier Depot | Hokio Beach Rd | Levin | New Zealand

Phone: 0800 226657 (International 0064-6-368-5508) | 0800 2BOOKS

Email: mail@touchwoodbooks.co.nz Web: www.touchwoodbooks.co.nz

Note- New Zealand Plant Protection Society members receive a discount provided they identify themselves as members at the time of ordering.

The Prime Minister's Science Prizes NOW OPEN

The Prime Minister's Science Prizes are New Zealand's pre-eminent annual awards for excellence in science. The Government of New Zealand introduced the Prime Minister's Science Prizes in 2009 as a way to raise the profile and prestige of science in New Zealand. Each year five prizes are awarded, with prize money totalling 1 million dollars.

The Prime Minister's Science Prizes are awarded to:

- The Prime Minister's Science prize: An individual or team who has made a transformative discovery or achievement in science that has had a significant impact on New Zealand, or internationally
- The Prime Minister's MacDiarmid Emerging Scientist prize: An outstanding emerging scientist undertaking research for a PhD in New Zealand, or within five years of the date of the award of their PhD
- The Prime Minister's Science Teacher prize: A teacher for outstanding achievement in teaching Science
- The Prime Minister's Future Scientist prize: A secondary school student for outstanding achievement in carrying out a practical and innovative research or technology project
- The Prime Minister's Science Media Communication prize: A practising scientist who is an effective communicator; this prize provides them with an opportunity to further develop their knowledge and capability in science media communication

The 2014 prize round closes Monday 4th August.

To find out more about the prizes or to enter, visit www.pmscienceprizes.org.nz

Where to find jobs in Plant Protection in New Zealand

Toni Withers has put together a simple summary for members searching for jobs in plant protection....

1. All crown research institutes now collaborate to advertise their jobs on a combined website: <https://careers.sciencenewzealand.org/home>
2. In addition the Royal Society provides a website for other science and technology jobs that may include university positions: <http://fusionz.royalsociety.org.nz/>
3. Don't forget about Seek, <http://www.seek.co.nz/>
4. Also these days it pays to put a search on TradeMe <http://www.trademe.co.nz/jobs>
5. Science jobs also of the Australasian Plant Protection Society <http://www.appsnet.org/public/careers/default.aspx>



Future conferences

VIII International Symposium on Chemical and Non-Chemical Soil and Substrate Disinfestation (SD 2014) in Torino, Italy. 13-18 July 2014. See: the symposium web-site. Contact: sd2014@unito.it

XIVth International Congress of Mycology, the XIVth International Congress of Bacteriology and Applied Microbiology and the XVth International Congress of Virology in Montreal, Canada. 27 July-1 August 2014. See: <http://www.montrealiums2014.org/>. Contact: iums2014@nrc-cnrc.gc.ca

11th Australasian Plant Virology Workshop 13-15th August 2014 Brisbane, Australia http://www.appsnet.org/Interest_Groups/Virology_workshop/index.html

29th International Horticultural Congress, "Horticulture - sustaining lives, livelihoods and landscapes", in Brisbane, Australia. 17-24 August 2014. See: www.ihc2014.org

The 19th Australasian Weeds Conference will be held in Hobart, Tasmania from 1-4 September 2014. www.eventspro.net/leishman/getdemo.ei?id=7020146&s=62W0ZSYUB **8th Australasian Soilborne Diseases Symposium** Hobart, Tasmania 10th-13th November 2014 <http://www.appsnet.org/asds/>

VII Congress on Plant Protection: Integrated Plant Protection – Knowledge-Based Step towards Sustainable Agriculture, Forestry and Landscape Architecture, Zlatibor, Serbia. 24-28 November 2014: http://www.iobc-wprs.org/events/20141124_First_Announcement_Congress_IPM_Serbia.pdf

5th International Conference on Alternative Methods of Crop Protection. Lille, France 11-15 March 2015: www.afpp.net

IPPC (International Plant Protection Congress) in Berlin, Germany. 24-27 August 2015. See: <http://www.ippc2015.de>.

8th International IPM Symposium: IPM - Solutions for a Changing World, Salt Lake City, Utah, USA. 23-26 March 2015: <http://www.ipmcenters.org/ipmsymposium15/>

Further listings are available here: <http://www.iobc-wprs.org/events/index.html>, <http://www.isppweb.org/>

NZPPS Corporate Members

AgResearch Limited
Agrisearch Analytical (NZ) Limited
Agrivet Services Limited
Agronica New Zealand Ltd
BASF New Zealand Limited
Bayer CropScience
Dow AgroSciences Ltd
Etec Crop Solutions
Field-Tek Ltd
Foundation for Arable Research
Horticulture New Zealand
Kenso NZ Limited
Landcare Research
Ministry for Primary Industries
NIWA
Nufarm NZ Limited
Omnia Nutriology
Peracto NZ Ltd
PGG Wrightson / Fruited Supplies
Pipfruit New Zealand Inc.
Plant & Food Research
Plant Protection Chemistry NZ
Scion
Syngenta Crop Protection Limited
Zelam Limited
Zespri International Ltd

WAIRAKEI RESORT

TAUPO • NEW ZEALAND

NEW ZEALAND PLANT PROTECTION SOCIETY 11-14 AUGUST 2014

ACCOMMODATION REGISTRATION FORM

PERSONAL DETAILS (please print or type)

Company _____

Surname _____

First Name _____

Accompanying Person _____

First Name _____

Postal Address _____

City _____

Phone (_____) _____

Fax (_____) _____

Email: _____

Dietary Requirements _____

Room Type	Room Rate	Date Arrive	Date Depart	No. Adults	No. Children	Special Requests
Single (King bed)	\$135					
Double (King bed)	\$135					
Twin (Two Double beds)	\$135					
Studio (King Bed)	\$135					
Villa (King Bed & Two Singles)	\$185					

RESERVATIONS ARE TAKEN ON A FIRST COME, FIRST SERVED BASIS

Room types are allocated according to bedding requirements. We are unable to guarantee any specific area of the resort.

- Rates quoted are per room per night in \$NZD and include 15% GST
- Room rate covers up to two adults sharing existing bedding
- Children 12 years or under sharing existing bedding no extra charge
- Wairakei Resort does not allow any dog's onsite, this includes those left in vehicles, apart from those accompanying vision impaired guests.
- **A credit card number, purchase order or Credit Card Authorisation (per below) will be required within 30 days of receiving your confirmation. Reservations not secured by credit card details or purchase order will be released 30 days prior to arrival**
- Cheque payment will only be accepted if received at least seven working days prior to arrival. Cheque payments will not be accepted on arrival or departure.
- Credit Card payments will attract a surcharge of 1.5%
- Cancellation within 30 Days of arrival will incur a charge of the first night's accommodation per room
- Guaranteed check in time is from 2:00pm. Check out time is 10:00am.
- Breakfast discounted to \$20.00pp is additional and optional

PLEASE SEND COMPLETED REGISTRATION FORMS TO:

Reservations Department, WAIRAKEI RESORT, Private Bag 2006, TAUPO

Phone: 07 374 8021, Fax 07 3748485, Email: stay@wairakei.co.nz

CREDIT CARD (Tick One)

Card Holder Name: _____

- American Express
- MasterCard
- Visa
- Diners Club

Credit Card Number: _____

Card Holder signature _____ Expiry Date: _____

I _____ hereby authorise for my method of credit card payment outlined above to be charged for the below mentioned hotel services:

All Charges Room Only Room & Breakfast
Room, Dinner & Breakfast Room & Meals